

# TOMBO™ BRAND

May 2025

Reusable flexible thermal insulation material, optimal for Energy Saving

## ENETHERMO™



**NICHIAS**

# Start Decarbonization from “Energy Saving”

Efforts for achieving carbon neutral in “2050”  
are promoted around the world.

NICHIAS supports the efforts of customers for decarbonization regarding heat, including energy saving,  
by the technologies of “TATSU-TAMOTSU (Insulation and Retention) of heat”.



\* TOMBO is a registered trademark or trademark of NICHIAS Corporation.  
\* Product names with ™ are trademarks of NICHIAS Corporation.

## “ENETHERMO™” most suitable for Energy Saving

ENETHERMO is a freely-detachable thermal insulation material product, which is manufactured by covering heat-insulation materials with various clothes and processing them in accordance with shapes of working objects, accompanied by parts for installation.

\* The product without parts for installation is “TOMBOTM No.4447 Thermal insulating futon”.

### Features

- Freely detachable and reusable with ease.
- Easy to install and the time for installation can be significantly reduced.
- No costs are necessary for installing thermal insulation materials upon maintenance.
- No waste generated at installation.
- Useful for improvement of work environment such as preventing burns and heat stroke, suppressing the rise of peripheral air temperature, etc.

\* We also manufacture products for high temperature upon request.

### Installation locations

- Pipes, valves, flanges
- Heat exchanger, tanks
- Turbine, pump, boiler
- Injection molding machine, extrusion molding machine, heat pressing machine
- Oven, heat treat furnace, other heat radiating equipment

### Goals and targets of main relevant SDGs



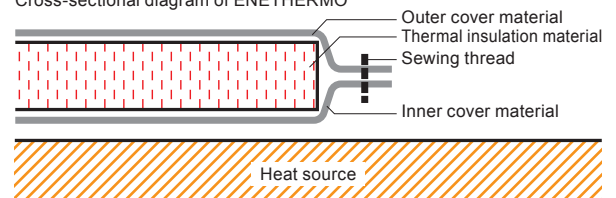
Relevant target 7.3



Relevant target 12.5



Cross-sectional diagram of ENETHERMO





# Composing materials

For ENETHERMO, we propose appropriate specifications according to use conditions among a wide variety of composing materials.

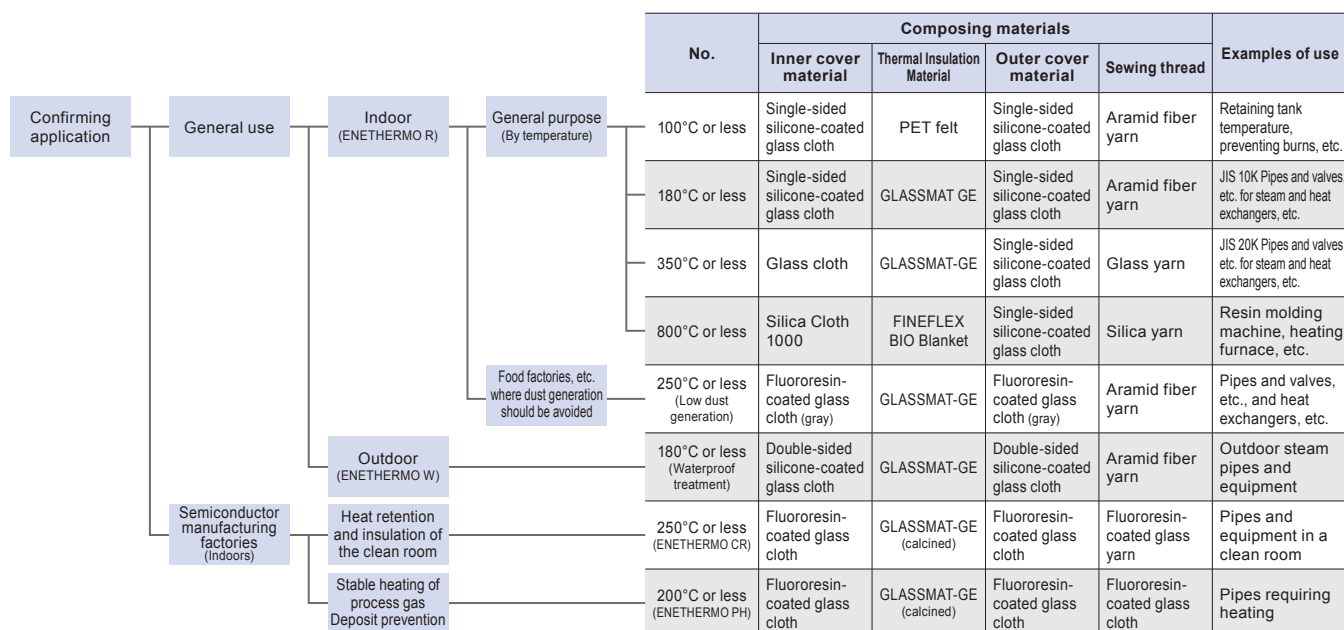
## Main composing materials



## Product specifications

Product number	Product name	Installation Location	Corresponding cleanliness	Product Overview
TOMBO™ No.4500-R	ENETHERMO R	Indoor		Standard product.
TOMBO™ No.4500-W	ENETHERMO W	Outdoor	—	Waterproof products. Double-sided silicone-coated glass cloth with excellent water resistance is used, and the special coating is applied to sewn parts.
TOMBO™ No.4500-CR	ENETHERMO CR	Clean room	ISO14644-1 Class 6	Products available for use in the clean room. Glass cloth with fluoropolymer coating with less dust generation is used.
TOMBO™ No.4500-PH	ENETHERMO PH			Pipe heating heater in which the thermal insulation material and the heating element are integrated.

## Selection flow for main specifications and the features of various specifications



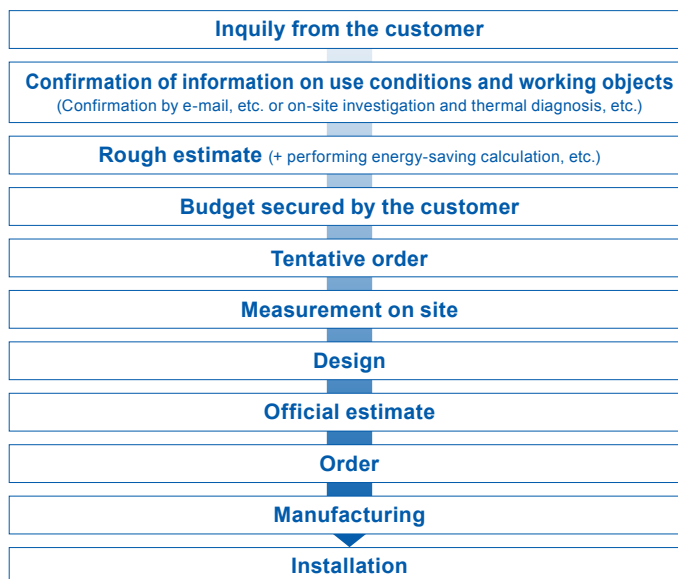
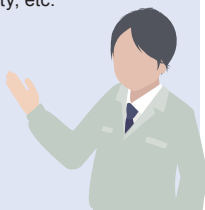
Descriptions above are only representative examples. Please contact us also for other applications and temperatures.

# Procedure from inquiry to installation

The general procedure from inquiry to installation of ENETHERMO is as follows. (It may change according to requests and conditions of the customer.)





## Main confirmation items at the time of inquiry

- Use conditions  
(installation location, temperature, type of inner fluid, etc.)
- Information of object  
Valves : type of valve, manufacturer, model, pressure × diameter, connecting method, inside screw or outside screw, single or in combination, quantity, etc.  
Equipment : name or type, model, size, with or without vibration
- Drawings, photos, and other requirements



## Standard products

Standard products not requiring designing are also available in our line-up. Standard products require no costs or time for designing and measurement of new design.

TOMBO™ No. / Product name	Nominal pressure (maximum working temperature)	Size	Valves			Flange	Blank flange
			Connecting method	Globe valve	Y-shaped strainer	Check valve	
4500-R / ENETHERMO R 4500-W / ENETHERMO W	10K (180°C)	15-50A	Flange or screwed				
		65-200A	Screwed				
4500-R / ENETHERMO R	20K (350°C)	15-200A	Flange				

\* Please inform us of the manufacturer and the model number upon confirmation. For objects other than above, it may be possible to provide a rough estimate without measurement if we have manufactured them in the past.

\* Descriptions above are applicable only for single units, and the units in which valves or flanges are connected together or which are accompanied by supports are not included within the standard.



## Installation method

ENETHERMO is shaped according to the working part, and can also be easily installed by anyone using the parts for installation such as hook-and-loop fasteners and belts. With hook-and-loop fasteners, it can be installed quickly in a single operation, as shown in the picture.

**Installation procedure of ENETHERMOTM™ (on globe valve, flange type, 65A)**



## Comparison with lagging (heat insulation with sheet metal, etc.)

	ENETHERMO	Lagging
Processed shape	⊙ This product also supports complex shapes	△ Only simple shape
Workability Maintainability	⊙ Freely detachable and can be installed by anyone	× Necessary to make a request to the provider of heat retention
Installation cost/ installation time	⊙ Can be installed in a short time	× Installation must be requested from a thermal insulation contractor.
Environmental burden	○ Can be used repeatedly → Waste reduction	△ Exchange every time → Large amount of waste
Appearance		

Detachability and responsiveness to complex shapes due to individual design are the Strong Points of ENETHERMO



## Various installation examples

Through custom-made designs tailored to the customer's requirement and shapes, we achieve excellent adhesion and a visually appealing finish. Used for a wide variety of purposes, not only for energy saving but also for improving work environment (preventing burns and heat stroke), etc.



Valves in the boiler chamber and around the steam header



Medical center A Hot water pump



Outer periphery of heat exchanger



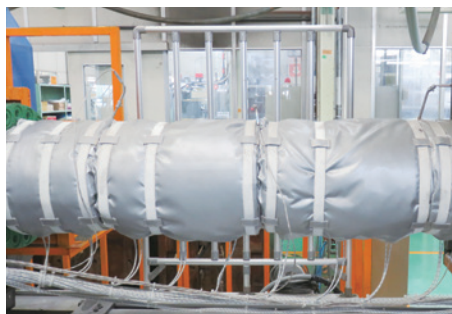
Food manufacturing device A Main body



Food manufacturing device B Main body and piping



Resin products manufacturing plant Injection molding machine



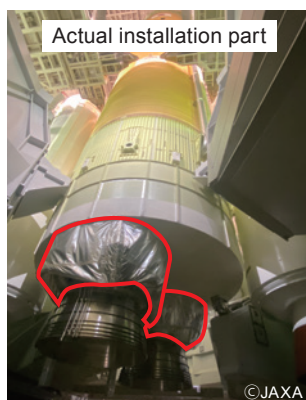
Home appliance manufacturing plant Injection molding machine



Heat supply plant Steam header valve (Marunouchi Heat Supply, Co., Ltd.)

Thermal insulation materials of ENETHERMO type are also used in the space industry section requiring advanced technologies including rocket engines, as NICHIA's high engineering skills, design responsiveness, and quality control ability have been highly evaluated.

Engine blanket for the H3 rocket

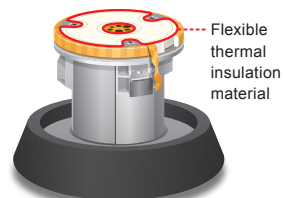


©JAXA

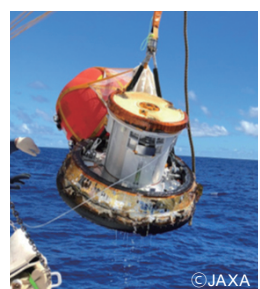


©JAXA

Small Re-entry Capsule



Small Re-entry Capsule loaded on the "Space Station Resupply Vehicle (KOUNOTORI 7)"



©JAXA

# Utilization of heat diagnosis and energy saving calculation

We are able to provide support towards the efforts of customers promoting energy saving, not only by manufacturing and sales of thermal insulation materials, but also by **heat diagnosis** and **energy saving calculation**.

## Thermal diagnosis



We will identify the locations with increased heat leakage and energy loss using thermography, etc., to propose the most suitable installation of heat-insulation.

- Even for boiler chambers where thermal insulation materials seem to have been installed, in several cases the thermal images show that a large amount of heat has been lost from uninstalled valves, etc.
- By lending the thermography, the customers can check the high-temperature parts by themselves.

Photographing point	Photo	Thermal image
Boiler upper part		
Header upper part		

## Energy-saving calculation

Heat calculation is performed by the result of thermal diagnosis and use conditions, and the simulation of energy saving efficiency by installation of ENETHERMO (CO<sub>2</sub> emissions, fuel cost, reduction amount of dissipated heat, etc.) is carried out. By quantifying the effect, the customers can use it for reference documents for considering cost efficiency or applying for the budget within their company.

### Inputs (required information)

- Used fuel : A heavy oil, electricity, etc.
- Fuel unit price : ○○yen/l, etc.
- Annual working time : ○○○hr/year
- Outdoor temperature : ○○°C
- Surface temperature before installation : ○○○°C
- Type of working object : ○○valve, pipe, etc.
- Size, quantity, etc. : JIS10K○○A ○ pieces  
(for equipment, the surface area of installation part)
- Installing thermal insulation material<sup>Note 1</sup> : Glass mat GE, etc.

### Outputs (calculation results)

- Amount of CO<sub>2</sub> reduction : ○○ ton/year
- Amount of reduction : ○○○ thousand yen/year
- Amount of crude oil reduction : ○ kL/year

Note 1: Conditions of thermal insulation materials to be installed are determined according to the design standards of NICHIAS unless otherwise specified.



## Example of the energy saving calculation sheet

Messrs. ○○○○ Co., Ltd.

Name of business partner	Mr./Mrs. ○○○○ Co., Ltd.
Date of measurement	2024 Month Date
Site name	△△△ plant ××× room
Special note	

Crude oil reduction	CO <sub>2</sub> reduction	Amount of reduction
7.05 kL/year	19.35 ton/year	597,000 yen/year

Trail calculation of effects	(Amount of A heavy oil reduction) Energy Saving effect [kW] × 3.6[MJ/kWh] ÷ (calorific value [MJ/l] × 0.9)	High-level calorific value 38.9 MJ/l
Amount of crude oil reduction	Amount of A heavy oil reduction [l/h] × Annual working hours [h/year] × Crude oil conversion coefficient [Kl/kt] ÷ 1000	Crude oil conversion coefficient <sup>*1</sup> 1.004 Kl/kt
Amount of CO <sub>2</sub> reduction	Amount of A heavy oil reduction [l/h] × Annual working hours [h/year] × CO <sub>2</sub> Emission calculation coefficient [ton/kt] ÷ 1000	CO <sub>2</sub> emission calculation coefficient <sup>*2</sup> 2.753 ton/kt
Amount of reduction	Energy Saving effect [kW] × Annual working hours [h/year] × Energy unit price [yen/kWh]	

Use conditions	Used fuel Fuel oil A	Fuel unit price 85 yen/l	Fuel oil A 37.145 MJ/l
Boiler efficiency 90%	Outdoor temperature 20°C	Thermal Insulation Material GLASSMAT GE	Low-level calorific value 37.145 MJ/l
			kWh-converted energy unit price 9.3[yen/kWh]
			9.3 [yen/kWh] = 85 yen/l ÷ 3.6 [MJ/kWh] (36.7 MJ/l × 0.90)

### Outputs (calculation results)

\*1: High-level calorific value × 0.0258 kL/GJ  
\*2: Carbon emission coefficient × high-level calorific value × 44/12  
(44/12 is the particle conversion value from C to CO<sub>2</sub>)

### Inputs (required information)

Calculation of thermal conductivity in a constant state based on JIS A 9501 standard practice for installation contract of industrial thermal insulation: vertical plane, natural convection

Details of installation part									For installation contract or industrial thermal insulation: Vertical plane, natural convection					
Working conditions											Total			Remark
No.	Name of installation part	Size	Connecting method	Surface area [m <sup>2</sup> ]	Number of pieces Total 13 pieces	Annual working hours [h/year]	Surface temperature before installation [°C]	Installation thickness [mm]	Surface temperature after installation (Simulation) [°C]	Energy saving effect [kW]	Surface area [m <sup>2</sup> ]	Energy saving effect [kW]	Reduction amount [thousand yen/year]	
1	Globe valve	10K-25A	Flange type	0.13	4	8760	180	20	49	0.33	0.52	1.30	106	
2	Gate valve	10K-80A	Flange type	0.37	3	8760	180	30	42	0.95	1.10	2.86	232	
3	Reducing valve	10K-50A	Flange type	0.30	4	8760	180	20	49	0.73	1.18	2.94	238	
4	Flange	10K-50A		0.05	2	8760	180	20	49	0.13	0.11	0.27	22	
Total											2.91	7.37	597	

Coefficients used for calculation are reviewed as required.

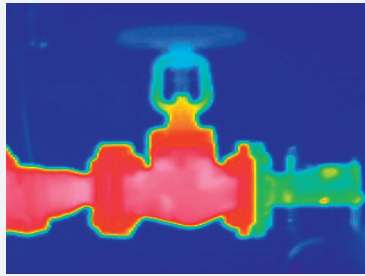


# Energy-saving calculation example

\* The above figures are calculated based on heat simulations, and are not guaranteed.

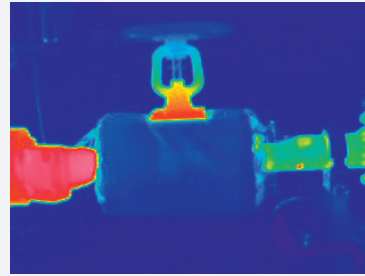
## Example 1 Steam valve

Before installation



Average surface temperature:  
**Approx. 170°C**

After installation

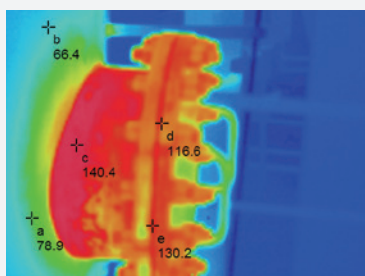


Average surface temperature:  
**Approx. 44°C**

<Energy Saving effect> Use conditions	Energy saving amount	Crude oil reduction	CO <sub>2</sub> reduction
<ul style="list-style-type: none"> <li>Where the 10K Globe valve 40A operates at the pressure force of 0.8MPa (temperature 170°C)</li> <li>With outdoor temperature at 20°C, annual operational hours at 5000 hr/year, A heavy oil @85 yen/ℓ, and the boiler efficiency 80%</li> </ul>	<b>20.0</b> [thousand yen/piece-year]	<b>0.24</b> [kℓ/piece-year]	<b>0.66</b> [t-CO <sub>2</sub> /piece-year]

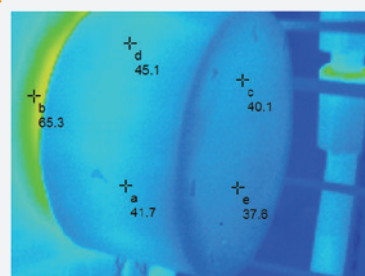
## Example 2 Manhole on the pressure container

Before installation



Average surface temperature:  
**Approx. 140°C**

After installation



Average surface temperature:  
**Approx. 45°C**

<Energy Saving effect> Usage conditions	Energy saving amount	Crude oil reduction	CO <sub>2</sub> reduction
<ul style="list-style-type: none"> <li>Where ENETHERMO is installed at a manhole on the pressure container with the installation area of 0.5m<sup>2</sup></li> <li>Outdoor temperature at 20°C, annual operational hours at 5760hr/year, A heavy oil@85yen/ℓ, and the boiler efficiency 80%,</li> </ul>	<b>48.0</b> [thousand yen/piece-year]	<b>0.56</b> [kℓ/piece-year]	<b>1.54</b> [t-CO <sub>2</sub> /piece-year]





## ■ Head Office

6-1, Hatchobori 1-chome, Chuo-ku, Tokyo 104-8555, Japan  
**International Marketing and Sales Group**  
 Phone: 81-3-4413-1132 Fax: 81-3-3552-6108  
 Web Site: <https://www.nichias.co.jp/>

## ■ Overseas Sales Companies

### Indonesia

#### PT. NICHIAS SUNIJAYA

Sequis Tower Level 19 Suite 1&2,  
 Jl. Jend Sudirman Kav. 71, Jakarta 12190, Indonesia  
 Phone: +62-21- 2277-6101 Fax: +62-21- 2793-8033

### Malaysia

#### NICHIAS SOUTHEAST ASIA SDN. BHD.

Suite A1102, 11th Floor, West Wing, Wisma Consplant 2,  
 No. 7, Jalan SS 16/1, 47500 Subang Jaya, Selangor Darul Ehsan, Malaysia.  
 Phone: +60-3-5636-4067 Fax: +60-3-5636-4078

### Singapore

#### NICHIAS SINGAPORE PTE. LTD.

25 International Business Park, #01-15/17 German Centre,  
 Singapore 609916  
 Phone: +65-6571-0830/0838 Fax: +65-6265-7681

### Vietnam

#### NICHIAS VIETNAM CO., LTD

Room 709, Elite Business Center, 7th Floor Diamond Flower Building,  
 48 Le Van Luong Street, Nhan Chinh Ward, Thanh Xuan District,  
 Hanoi, Vietnam  
 Phone: + 84-24-6664-3136 Fax: + 84-24-6666-8168

### Thailand

#### NICHIAS (THAILAND) CO., LTD.

85 Moo 1, Wellgrow Industrial Estate T. Homsin, A. Bangpakong  
 Chachoengsao 24180, Thailand  
 Phone: +66-38-570-600 Fax: +66-38-570-601

#### THAI NICHIAS INTERNATIONAL CO., LTD.

Unit 1107, 11th Floor, AIA Capital Center  
 89 Ratchadaphisek Road, Dindaeng, Dindaeng, Bangkok 10400 Thailand  
 Phone: +66-2-001-2060 Fax: +66-2-001-2062

### China

#### NICHIAS (SHANGHAI) TRADING CO., LTD.

霓佳斯（上海）贸易有限公司  
 Room 1701, THE PLACE, Tower A, No. 100 Zun Yi Road,  
 Changning District, Shanghai, P.R.China Postcode 200051  
 中国上海市长宁区遵义路100号虹桥南丰城A栋1701室 邮编200051  
 Phone: +86-21-6236-1783 Fax: +86-21-6236-1781

#### NICHIAS (SHANGHAI) TRADING CO., LTD. Guangzhou Branch

霓佳斯（上海）贸易有限公司 广州分公司  
 17F-G, Gold Sun Building, No.109 Tiyu West Road, Guangzhou,  
 Guang Dong Province, 510620, P.R.China  
 中国广东省广州市天河区体育西路109号高盛大厦17楼G室 邮编 510620  
 Phone: +86-20-3879-1640 Fax: +86-20-3879-1647

#### NICHIAS (SHANGHAI) AUTOPARTS TRADING CO., LTD.

霓佳斯（上海）汽车零部件贸易有限公司  
 Room 1702, THE PLACE, Tower A, No. 100 Zun Yi Road,  
 Changning District, Shanghai, P.R.China Postcode 200051  
 中国上海市长宁区遵义路100号虹桥南丰城A栋1702室 邮编200051  
 Phone: +86-21-6236-2668 Fax: +86-21-6236-2667

## ■ Overseas Construction Companies

### Malaysia

#### NICHIAS SOUTHEAST ASIA SDN. BHD.

Suite A1102, 11th Floor, West Wing, Wisma Consplant 2,  
 No. 7, Jalan SS 16/1, 47500 Subang Jaya, Selangor Darul Ehsan, Malaysia.  
 Phone: +60-3-5636-4067 Fax: +60-3-5636-4078

### Thailand

#### THAI-NICHIAS ENGINEERING CO., LTD.

45 Huaypong-Nongbon Road, Huaypong, Muang Rayong,  
 Rayong Province 21150, Thailand  
 Phone: +66-38-682-242 Fax: +66-38-691-156

## ■ Overseas Factories

### Indonesia

#### PT. NICHIAS ROCKWOOL INDONESIA

#### PT. NICHIAS METALWORKS INDONESIA

### Malaysia

#### NICHIAS FGS SDN. BHD.

#### NT RUBBER-SEALS SDN. BHD.

### Vietnam

#### NICHIAS HAIPHONG CO., LTD.

### China

#### SUZHOU NICHIAS INDUSTRIAL PRODUCTS CO., LTD.

(苏州霓佳斯工业制品有限公司)

#### SUZHOU NICHIAS SEAL MATERIAL CO., LTD.

(苏州霓佳斯密封材料有限公司)

#### SHANGHAI XINGSHENG GASKET CO., LTD.

(上海兴盛密封垫有限公司)

#### SUZHOU SHUANGYOU AUTOPARTS CO., LTD.

(苏州双友汽车零部件有限公司)

### India

#### NICHIAS INDUSTRIAL PRODUCTS PRIVATE LTD.

### Czech

#### NICHIAS AUTOPARTS EUROPE a.s.

### Mexico

#### NAX MFG, S.A.DE C.V.

## ⚠ Cautions

- The products included in this catalog are intended for common use, including those presented in the catalog. If you intend to use any of the products in a way that requires extremely high quality and reliability such that any possible defect may directly affect the safety of human lives, please make sure to consult with our company in advance and take necessary measures at your responsibility.
- Because the stated material values may vary according to actual usage environments or circumstances, please consider such figures as indications for reference.
- The content of the catalog explains the features of the products when they are used alone. When actually using the products, please start using them after testing them under the actual usage environment.
- The content of the explanation of the products may be modified without any advance notice, and the production of the product may also be discontinued without advance notice. Please obtain the latest version of the catalog, and confirm the content thereof. The date of issuance of this catalog is printed on this page.
- The standards, accreditation and provisions of laws included in the catalog may not conform with the latest version thereof.
- We strictly prohibit any acts of infringement upon our rights that are protected by the Copyright Act with regard to information included in the catalog, through the production of copies or imitations, misappropriation or unauthorized reprinting.
- Please be informed that, in the case where any problem involving a third party's industrial property right arises due to the use of any product included in the catalog, our company shall not be responsible for any problems other than the problems arising strictly due to reasons related to only such products.
- Please be aware that our company will not bear any responsibility for the following damage related to our products:
  - Damage arising due to natural disasters or accidents occurring for reasons that are not attributable to our company;
  - Damage arising due to remodeling, repairing or other acts by a third party;
  - Damage arising due to the willful intent or negligence of the customer or the user, or due to the improper use or use under abnormal conditions of the products;
  - Damage arising due to the failure to carry out regular checkups and appropriate repairs, maintenance and part replacements, considering various conditions, such as the usage conditions, usage environment and usage period, etc., of the product;
  - Indirect damage (including any operational damage, lost profits, opportunity losses, etc.) arising due to the use of or inability to use our company's product;
  - Damage arising due to a situation which was unforeseeable under the technical standards at the time of the shipment of our company's product; or
  - Damage arising due to reasons that are not attributable to our company.